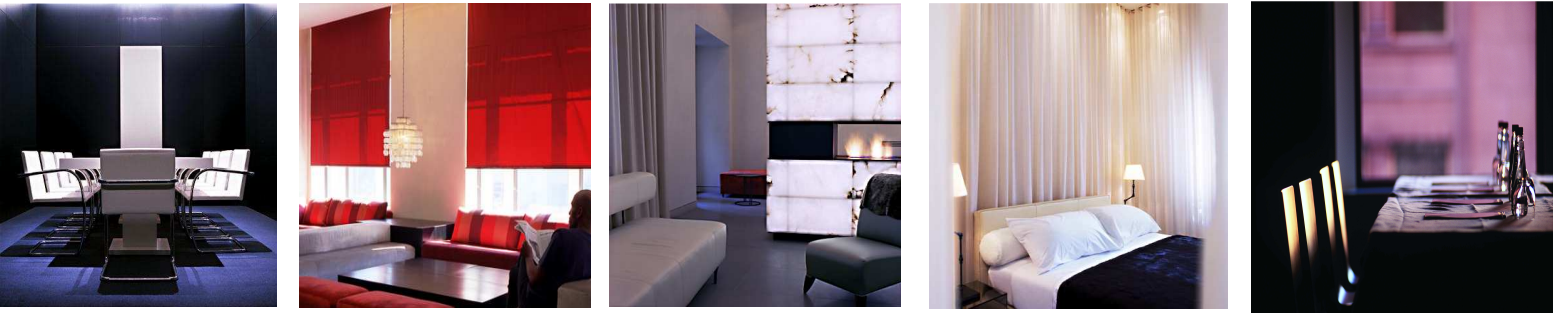


ST PAUL
HOTEL



ST PAUL HOTEL
355, RUE MCGILL
MONTREAL, QC
CANADA H2Y 2E8
T 514 380 2222
F 514 380 2200
HOTELSTPAUL.COM

ST PAUL HOTEL



HONORS AND ACCOLADES

THE ST PAUL HOTEL HAS RECEIVED THE HIGHEST ACCOLADES FROM AUTHORITATIVE BODIES, PRESTIGIOUS PUBLICATIONS AND MOST NOTABLY OUR PAST GUESTS.

CERTIFICATE OF EXCELLENCE – 2010
TRIPADVISOR

500 BEST HOTELS IN THE WORLD – 2007
TRAVEL + LEISURE

500 BEST HOTELS IN THE WORLD – 2006
TRAVEL + LEISURE

"HOT LIST 2002 - 32 OF THE COOLEST NEW HOTELS"
CONDÉ NAST TRAVELLER UK EDITION

"BEST HOTELS ON THE FORMULA ONE CIRCUIT 2002"
SECOND POSITION BESIDE THE COLUMBUS IN MONACO
CONDÉ NAST TRAVELLER UK EDITION

"HOTTEST HOTELS AROUND THE WORLD" – 2002
CONDÉ NAST TRAVELLER UK EDITION

"HOT LIST 2002- 50 TOP NEW RESTAURANTS" – 2002
CONDÉ NAST TRAVELER US EDITION

"TOP PROJECT WINNER"
BEST OF CANADA DESIGN AWARD 2002 - CANADIAN INTERIORS MAGAZINE -

"BEST DESIGNED HOTELS IN NORTH AMERICA" – 2002
DESIGN HOTELS

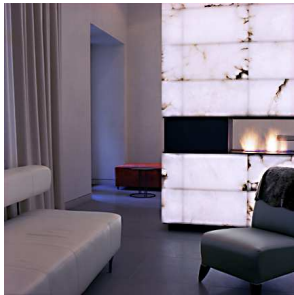
"GRAND PRIX DU JURY 2002"
COMMERCE DESIGN MONTRÉAL

"ULYSSE 2002, FINALIST"
QUÉBEC TOURISM GRAND PRIX

"TOP PROJECT WINNER "
INTÉRIEURS MAGAZINE - INTERIOR DESIGNER SOCIETY OF QUEBEC
SÉLECTION INTÉRIEURS 2002 -

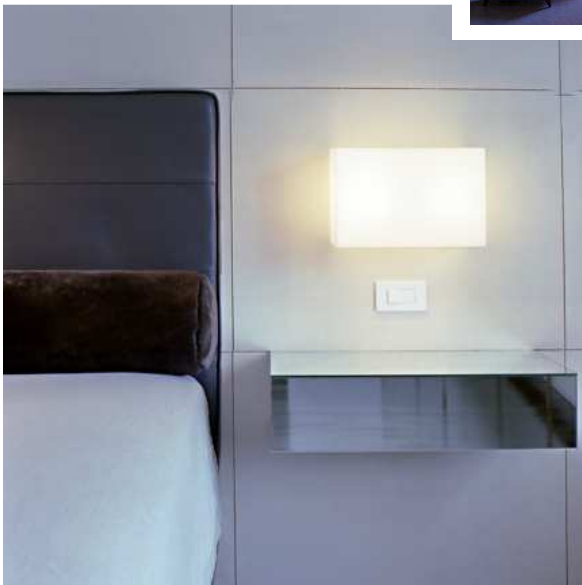
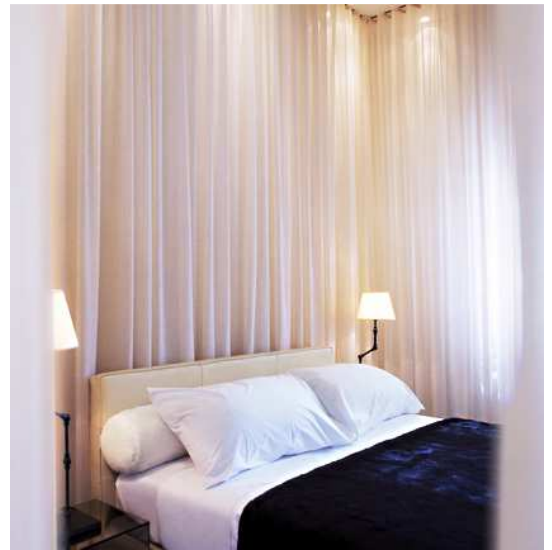
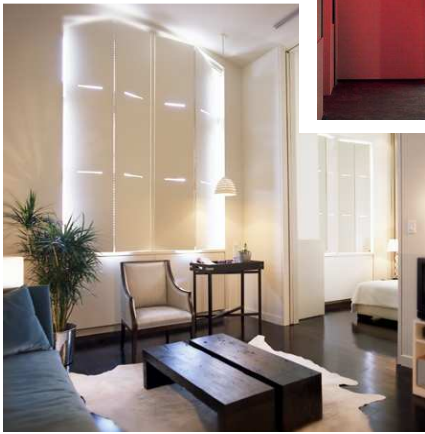
HOTEL PROFILE

BUILT IN 1900 BY MONTREAL ARCHITECT ALEXANDER G. HUTCHINSON, THE CANADIAN EXPRESS BUILDING HOUSED THE COMPANY OF THE SAME NAME. TEN STORIES HIGH, THIS WAS ONE OF THE CITY'S FIRST HIGH-RISES. LION'S HEAD GARGOYLES LOOK OVER THE FRONT OF THE BUILDING, WHERE A STRIKING COLONNADE BESIEGES THE MAIN DOORWAY. CANADIAN EXPRESS WAS A BRANCH OF THE FABLED GRAND TRUNK RAILWAY WITH NEIGHBORING OFFICES. PERHAPS AS A PRECURSOR OF MONTREAL'S MODERN-DAY UNDERGROUND CITY, A TUNNEL LINKED THE TWO COMPANY BUILDINGS.



THE ST. PAUL PLACES THE TRENDIEST OF MONTREAL AT YOUR DOORSTEP. LOCATED IN FASHIONABLE OLD MONTREAL, THE GUEST LIVES AMIDST THE OLD CITY'S JOIE-DE-VIVRE AND URBAN VIEWS. IT IS A STONE'S THROW FROM THE OLD PORT, AND A BRIEF WALK FROM THE BUSTLE OF DOWNTOWN MONTREAL'S SHOPPING AND BUSINESS CENTRES EASILY ACCESSIBLE FROM MCGILL STREET.

THE ST. PAUL'S IMPOSING BEAUX-ARTS CONSTRUCTION CONSISTS OF 120 ROOMS, INCLUDING 24 SUITES. THE LOBBY IS ADORNED WITH A STATELY FIREPLACE, EMBELLISHED WITH TRANSLUCENT ALABASTER ROCK. THE ETHEREAL ROOM DECOR ALTERNATES FROM FLOOR TO FLOOR. EARTH ROOMS FEATURE GROUNDED TONES AND SOLIDITY, WHILE SKY-THEMED ROOMS INCLUDE ELEMENTS OF LIGHT AND SPACE. FURNISHINGS IN EVERY ROOM AND SUITE COMBINE UNIQUE TREASURES WITH CUSTOMIZED ARTICLES, INCORPORATING DIGNIFIED MATERIALS SUCH AS SILK, STONE, AND RAW METAL. EACH ROOM'S LARGE WINDOWS OFFER THE GUEST A DISTINCTIVE VIEW OF THE CITY WHETHER IT IS THE METROPOLITAN CITY SKYLINE, THE LIVELINESS OF THE OLD PORT OR A TIMELESS ARCHITECTURAL PIECE.



S T P A U L

ROOMS AND SUITES

A SOFT, MONOCHROMATIC DESIGN PALETTE CREATES AN AMBIENT, SERENE ATMOSPHERE. THE FOUR BASIC ELEMENTS OF FIRE, ICE, EARTH AND SKY HAVE BEEN ABSTRACTED WITHIN THE HOTEL, DISTILLING CANADA'S MOST BASIC FEATURES.

ALL GUEST ROOMS ARE ELEGANTLY FURNISHED, COMBINING CUSTOM-DESIGNED FURNITURE WITH 20TH CENTURY TREASURES. EACH ROOM'S PICTURE WINDOWS OFFER THE GUEST A DISTINCTIVE VIEW OF THE CITY WHETHER THE METROPOLITAN CITY SKYLINE, THE LIVELIHOOD OF THE OLD PORT OR A TIMELESS ARCHITECTURAL PIECE.

THE 120 GUEST ROOMS AND SUITES ARE DISTRIBUTED ON 8 FLOORS AND ONE PENTHOUSE FLOOR, FOR 15 ROOMS PER FLOOR. PENTHOUSE LEVEL HOUSES THE SAME CATEGORIES OF ACCOMMODATIONS WITH THE ADDED LUXURY OF CATHEDRAL CEILINGS, SPECTACULAR VIEWS, AND SPECIAL SIGNATURE AMENITIES.

ROOM TYPES:

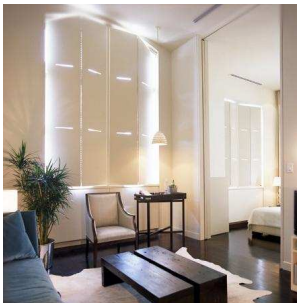
SUPERIOR QUEEN (SQ/SQN) OR DOUBLE DOUBLE (SDD/SDDN)

BEAUTIFULLY PROPORTIONED ROOMS OFFERING CHIC, TASTEFUL, MINIMAL YET PRACTICAL ACCOMMODATIONS INCLUDING A WORKING/DINING TABLE, CLASSY CLOSET AND SPACIOUS BATHROOM FOR ONE OR TWO GUESTS. THE DOUBLE DOUBLES HAVE TWO DOUBLE BEDS, AND MAY COMFORTABLY ACCOMMODATE TWO TO FOUR GUESTS. FURNISHED WITH EXCLUSIVELY DESIGNED PIECES OF FURNITURE INCORPORATING NOBLE MATERIALS SUCH AS WOOL, SILK, STONE, RAW METAL AND GLASS, THESE ROOMS ARE TAILORED IN A MOST CONTEMPORARY YET TIMELESS WAY. THE ROOMS' LARGE WINDOWS OFFER A WEALTH OF PANORAMAS WHILE ALLOWING AN ABUNDANCE OF NATURAL LIGHT TO FILTER IN.



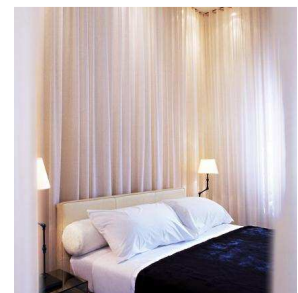
JUNIOR SUITE (JQ/JQN)

ALL JUNIOR SUITES ACCOMMODATE ONE OR TWO GUESTS AND HAVE AN ELEGANT LIVING AREA SEPARATED FROM THE BEDROOM BY POCKET DOORS INCLUDING A WORKING/DINING TABLE, STYLISH CLOSET AND A SOFA BED ALLOWING FOR THE POSSIBILITY OF AN EXTRA PARTY. A DREAMY ATMOSPHERE IS CREATED IN THE BEDROOM BY A TALL CURTAIN FLOATING BEHIND THE BED. THE ADJACENT BATHROOM FEATURES TWO CUSTOM-MADE MONOLITHIC STONE SINKS, SLEEK DORN BRACHT FAUCETS AND A TWO-PERSON BATHTUB.



DELUXE SUITE (DQ/DQN)

THIS SUITE OFFERS THREE DISTINCTIVE SPACES SEPARATED FOR PRIVACY; A LIVING ROOM EQUIPPED WITH A DOUBLE SOFA BED, DINING ROOM, AND THE "CURTAIN ROOM". THIS DESIGNATES THE BEDROOM, WHEREIN THE BED SOFTLY FLOATS INTO A WALL OF LIT FABRIC. THE ADJACENT BATHROOM FEATURES TWO CUSTOM-MADE MONOLITHIC STONE SINKS, A TWO-PERSON BATHTUB AND A SEPARATE SHOWER. THE ROOMS' FOUR LARGE WINDOWS WELCOME DAYLIGHT, WHILE OFFERING DISTINCT ARCHITECTURAL VIEWS OF THE CITY. THE UNIQUE FURNISHINGS COMBINE CUSTOM-DESIGNED FURNITURE AND EXCLUSIVE EARLY 20TH CENTURY PIECES UNCOVERED IN A PARIS FLEA MARKET AS WELL AS ORIGINAL ART DISPLAYED ON THE WALLS



ROOM TYPE SUMMARY

ALL ROOMS OFFER:

**CD PLAYER WITH STEREO
 HIGH SPEED WIRELESS INTERNET ACCESS
 2 PHONES WITH DUAL LINES
 PERSONAL SAFETY BOX
 INDIVIDUAL HEATING/AIR CONDITIONING CONTROLS
 COFFEE MACHINE
 GOURMET HONOUR BAR
 HAIR DRYER
 PLUSH BATHROBE
 IN HOUSE PAY MOVIES
 DAILY NEWSPAPER**

IN ADDITION, ALL SUITES OFFER:

**DVD PLAYER
 HANDCRAFTED CHOCOLATES
 ST.PAUL BOTTLED WATER
 SPARKLING MINERAL WATER
 DAILY NEWSPAPER**

	# OF ROOMS
SUPERIOR QUEEN	70
SUPERIOR DOUBLE-DOUBLE	14
JUNIOR SUITE	14
DELUXE SUITE	7
PENTHOUSE QUEEN	10
PENTHOUSE DOUBLE-DOUBLE	2
PENTHOUSE JUNIOR SUITE	2
PENTHOUSE DELUXE SUITE	1
TOTAL:	120

NON-SMOKING FLOORS:

**3,5,6,7,8,9,10 (PENTHOUSE)
 ROOMS**

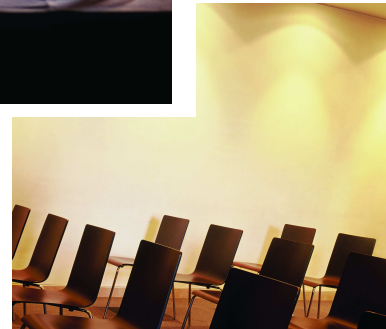
105

SMOKING FLOOR:

**4
 ROOMS**

15

R E S E R V A T I O N S 1 8 6 6 3 8 0 2 2 0 2



S T P A U L

MEETING FACILITIES

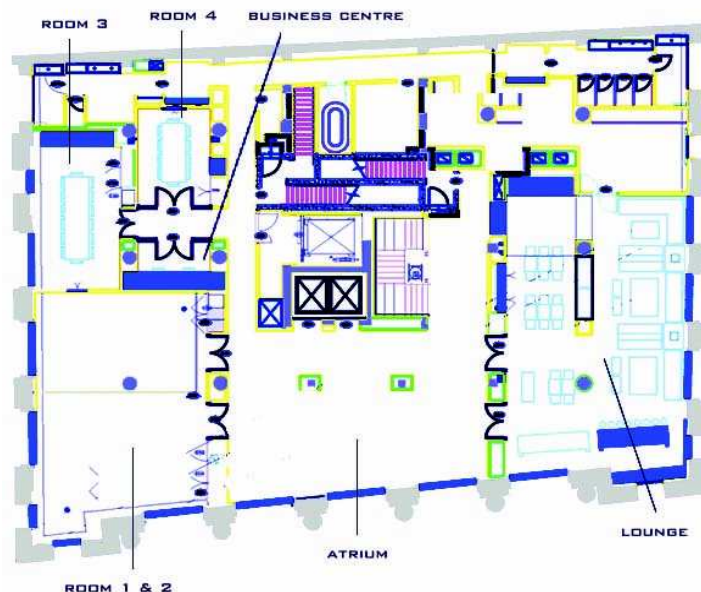
THE ST-PAUL HOUSES FOUR (4) CONFERENCE/MEETING ROOMS, AN ATRIUM AND A LOUNGE OVER A TOTAL OF 1582 SQUARE FEET, ACCOMMODATING 10 TO 110 PEOPLE ALL LOCATED ON THE SECOND FLOOR. OUR FACILITIES ARE FULLY EQUIPPED WITH ALL THE AMENITIES AND SERVICES REQUIRED TO HOST MEETINGS OR MEMORABLE RECEPTIONS:

- MOUNTED PROJECTORS WITH RETRACTABLE SCREENS
- VIDEO AND DVD PLAYER
- HIGH-SPEED INTERNET ACCESS
- WIRELESS MICROPHONE
- SECRETARIAL SERVICES (UPON REQUEST)
- LAPTOP RENTAL ON-SITE (RESERVATIONS PREFERRED)
- MOBILE PHONE RENTAL (RESERVATIONS PREFERRED)

*THE RENTAL PRICES FOR THE CONFERENCE ROOMS VARY. IT IS OUR PLEASURE TO HELP YOU PLAN YOUR EVENT, FOR ANY ASSISTANCE, PLEASE CONTACT VALERIE CHOUINARD.

BANQUET & MEETING SPACE - 2ND FLOOR

ROOM	BANQUET	CLASSROOM	U-SHAPE	BOARD-ROOM	THEATRE	COCKTAIL
	STYLE	STYLE	STYLE	STYLE	STYLE	STYLE
SALON 1	40	30	28	28	45	80
SALON 2	32	24	17	22	40	60
SALON 1 + 2	80	70	33	30	85	140
SALON 3	NA	NA	NA	14	NA	NA
SALON 4	NA	NA	NA	10	NA	NA
ATRIUM	78	50	27	22	85	120
LOUNGE	50	NA	NA	NA	NA	100
SALON 1 + 2 + ATRIUM	158	NA	NA	NA	NA	200
SALON 1 + 2 + ATRIUM + LOUNGE	208	NA	NA	NA	NA	300



HOTEL FACILITIES & SERVICES

- FOOD & BEVERAGE SERVICES EXCLUSIVELY BY RESTAURANT CUBE
RESERVATIONS : 514-876-2823
- ROOM SERVICE: 6A.M. - 10:30A.M.
11:30A.M. - 2P.M.
6P.M. - 10:30P.M.
- DELUXE EUROPEAN BREAKFAST BUFFET: 6:30 A.M. - 10:30 A.M.
- CONCIERGE SERVICES
- TURN-DOWN SERVICES FOR ALL GUESTROOMS INCLUDED
- DRY CLEANING SERVICES
- VALET PARKING SERVICES
- LAPTOP COMPUTER & CELLULAR PHONE RENTAL SERVICES
- OVERNIGHT SHOE SHINE SERVICES

ST-PAUL'S PROXIMITY

BUSINESS

- | | |
|--------------------------------------------------------|-------|
| • CONVENTION CENTRE/ PALAIS DES CONGRÈS DE MONTRÉAL | 500 M |
| • SUBWAY STATION/ METRO SQUARE-VICTORIA | 50 M |
| • EXHIBITION HALL/ PLACE BONAVENTURE | 50 M |
| • WORLD TRADE CENTRE/ CENTRE DU COMMERCE INTERNATIONAL | 50M |
| • EXHIBIT HALL - STADE OLYMPIQUE | 5 KM |

ATTRACTIONS

- | | |
|--------------------------------|--------|
| • OLD PORT OF MONTREAL | 100 M |
| • POINTE-À-CALLIÈRE MUSEUM | 500 M |
| • NOTRE-DAME BASILICA | 500 M |
| • CASINO DE MONTRÉAL | 3 KM |
| • AMUSEMENT PARK - LA RONDE | 6 KM |
| • PLANETARIUM OF MONTREAL | 4 KM |
| • SCIENCE CENTRE | 100M |
| • BIODOME | 5 KM |
| • MONTREAL MUSEUM OF FINE ARTS | 2 KM |
| • CONTEMPORARY ART MUSEUM | 1.5 KM |
| • BELL CENTRE | 2 KM |
| • MCCORD MUSEUM | 1.5 KM |

ENTERTAINMENT

- | | |
|---------------------------------------------|--------|
| • BELL CENTRE | 2 KM |
| • CASINO DE MONTRÉAL | 3 KM |
| • MONTREAL SYMPHONY ORCHESTRA - PL DES ARTS | 1.5 KM |